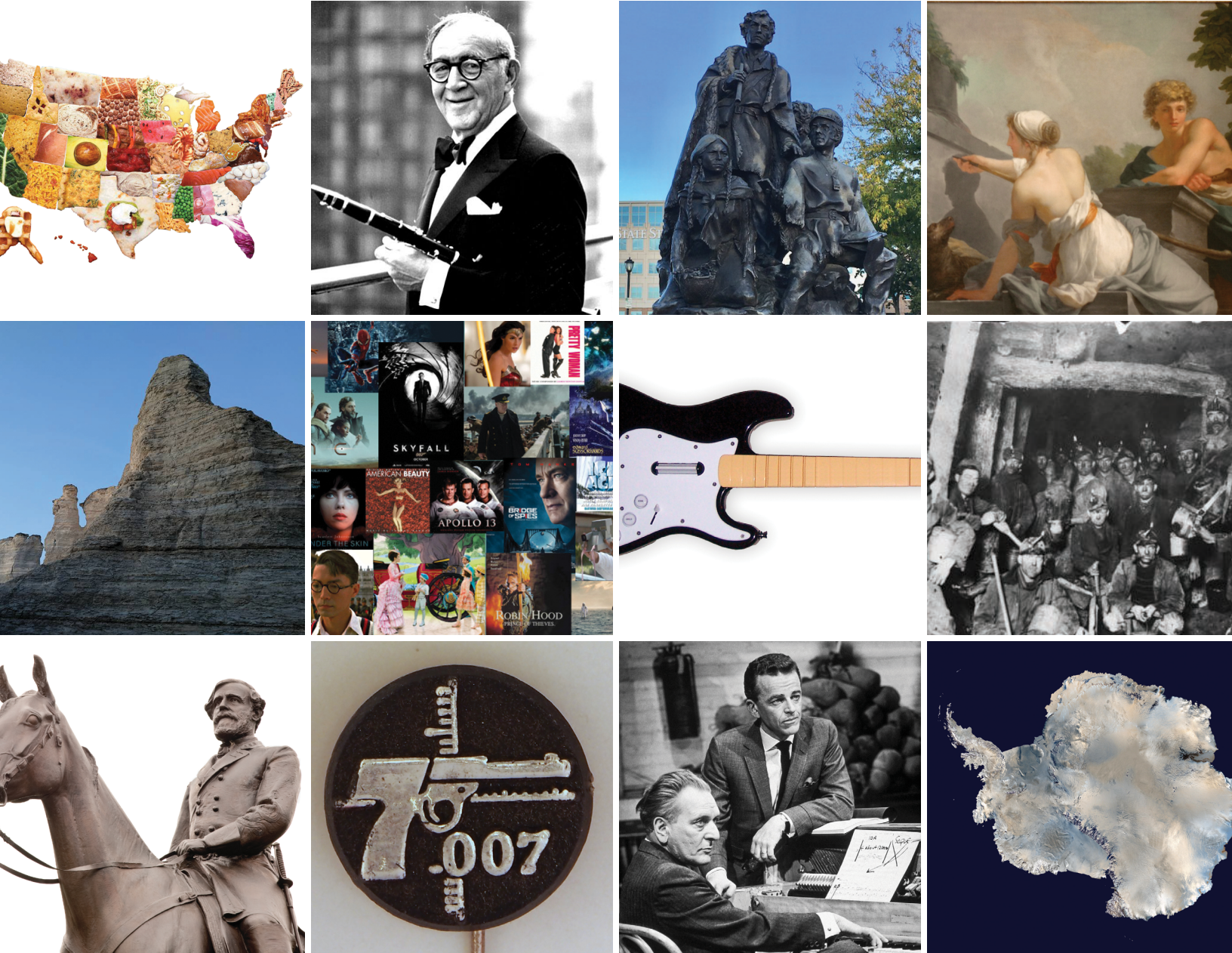


Osher LIFELONG LEARNING INSTITUTE

Summer 2024

AT THE UNIVERSITY OF KANSAS

Enrichment short courses & special events specially developed for folks 50 and better.



No homework. No tests. No pressure. It's just learning for the joy of it!

Enroll now at osher.ku.edu!



osher.ku.edu

KU JAYHAWK
GLOBAL
The University of Kansas

TABLE OF CONTENTS

KU Osher Member-Only Events 3
Courses by Location..... 4
Special Event Descriptions.....5
Course Descriptions7
Instructor Biographies..... 15
Registration Form..... 20
Partner Listings..... 22

DO YOU WANT TO TEACH A KU OSHER COURSE?

We are always looking for dynamic presenters who have a passion for learning. We invite you to experience the joy of giving to a community of lifelong learners who will appreciate you as a presenter and value you as a new member of our community. If you or someone you know would like to teach for KU Osher, contact us by email at osher@ku.edu.



HOW TO BECOME A FRIEND OF KU OSHER

Friends of KU Osher is a special group of people who donate funds to support the Osher Lifelong Learning Institute at the University of Kansas. These generous individuals recognize that accessible, low-cost, high-quality educational opportunities enrich the lives of adult learners. They also help us expand our programming and add new sites for courses and special events. Will you join them?

Contributions to Friends of KU Osher benefit our community and the KU Osher Institute by:

- Helping keep KU Osher’s tuition and fees low.
- Enabling more people to attend our courses and events.
- Continuing our efforts to attract highly qualified instructors.
- Expanding into areas in need of lifelong learning opportunities.
- Maintaining the technology we need to sustain the quality of our programming.

Every contribution helps. Please donate today.

- Supporter.....\$50–\$74
- Patron.....\$75–\$99
- Benefactor.....\$100–\$249
- Sponsor.....\$250–\$499
- Trustee.....\$500–\$999
- Regent.....\$1,000+

It’s easy to contribute. You can make your donation by completing the registration form included in this catalog, by calling toll free 888-653-6111, or by going online to kuendowment.org/osher.

PLANNED GIVING: BECOME A LEGACY FRIEND OF KU OSHER

Planned giving is a way for you to leave a legacy of lifelong learning to ensure that future learners will have the opportunities for intellectual engagement that are now enriching your life through the Osher Institute at the University of Kansas.

Planned giving is finding ways to make charitable gifts now, or after your lifetime, while enjoying financial benefits for yourself. These gifts are sometimes referred to as “stop-and-think” gifts because they require planning and sometimes help from your professional advisors. Unlike cash donations, they are typically made from assets in your estate rather than disposable income and come to fruition upon your death.

Planned gifts include:

- A bequest in your will or living trust.
- A charitable gift annuity.
- A charitable lead trust.
- An endowment fund.
- Retirement plan assets.
- Life insurance policies.
- A remainder interest in your home.

A misconception is that planned giving is only for the “wealthy.” The truth is, even people with modest means can make a difference through planned giving.

To learn how you can support Osher’s mission while ensuring your family’s financial security, call Andy Morrison at 785-832-7327 or email amorrison@kuendowment.org.

KU OSHER MEMBER-ONLY EVENTS

Become a KU Osher member! Your \$25 annual fee will give you access to course and special event registration, as well as exclusive social activities. The events on this page are no additional cost for members.

KU OSHER SPEAKER SERIES

Alzheimer's and Brain Health: From Treatment to Prevention

Come learn about the latest developments in Alzheimer's, including advances in how the disease is diagnosed. We'll explore new medications to treat the disease and study how lifestyle modifications may help with prevention. Hear how groundbreaking medical advances may enable early detection prior to the emergence of memory symptoms, paving the way for the application of novel preventative therapies.

Jeff Burns

Thur. June 13, 10-11:30 a.m.

In Person and Online
KU Edwards Campus
163 Regnier Hall
12610 Quivira Rd.,
Overland Park

Monarch Conservation Starts in Kansas

Kansas is home to Monarch Watch, an education, conservation, and research organization at the University of Kansas. Join us for a conversation with Monarch Watch's new director, Kristen Baum. She will provide an overview of Monarch Watch programs that support the monarch butterfly and share ways to get involved.

Kristen Baum

Thur. June 27, 2-4 p.m.

In Person
KU Osher Institute
1515 St. Andrews Dr.,
Lawrence

Luis Humberto Salgado: A Quixote of Music

Salgado (1903-1977) was an Ecuadorian art composer whose musical output combined national styles of music with European avant-garde music. He never left his home country and was basically a self-taught composer. This presentation will examine his eclectic musical style and how his work was perceived during his lifetime and today.

Ketty Wong

Thur. July 11, 10-11:30 a.m.

In Person
KU Osher Institute
1515 St. Andrews Dr., Lawrence

BOOK CLUB

The Book Club provides members with the opportunity to engage with each other and discuss books of interest while exploring fascinating topics. Outside of our monthly zoom meetings, members will be able to connect via the shared KU Osher email account.

**Fridays, June 21 & July 19
10-11:30 a.m.**

Online

ARTISTIC EXPLORATION CLUB

The Artistic Exploration Club meets to discuss great art and inspire members to nurture their own creative energies. The coordinator provides engaging

content for consideration and facilitates lively discussion and the sharing of ideas.

**Thursday, June 6 & Friday,
July 12, 10-11:30 a.m.**

Online

KU OSHER SOCIALS

The KU Osher socials occur in various locations. These exclusive events will allow you to meet other KU Osher members outside of the classroom and connect with like-minded lifelong learners. No agenda and no lectures. Just show up, visit, engage, and have FUN! Make new friends and feel free to bring a friend. Registration required.

**Tuesday, June 18
4:30-6 p.m.**

In person
KU Osher Institute
1515 St. Andrews Dr., Lawrence

**Monday, July 1
4:30-6 p.m.**

In person
Jayhawk Area
Agency on Aging
2910 SW Topeka Blvd., Topeka

**Wednesday, July 31
4:30-6 p.m.**

In person
Edwards Campus
12610 Quivira Rd.,
Overland Park

COURSE LISTINGS BY LOCATION

All courses are in person unless otherwise noted as online or hybrid. You may attend hybrid courses in person or join remotely by indicating your preference during the registration process.

CLAY COUNTY, MISSOURI

- Bond. James Bond: 70 Years of Weapons, Women, and (foiled) World Domination
- Thomas Edison: An American Genius

EMPORIA

- German Settlements and Culture in Kansas

EUDORA

- Making Tracks: American Railroads Then and Now

LAWRENCE

- Antarctica
- Energy
- A Forensic Study of Lincoln's Assassination
- The Generals' Wives: How the Military Shaped the Role of First Lady
- Going for Baroque: Getting a Handle on Handel and Traveling Back to Bach
- Great American Statesmen
- High Performing Governance: Bridging the Gap Between Politics and Administration
- An Introduction to Marine Biology for Non-Scientists
- The JFK Assassination: 60 Years Later
- The King of Swing
- Putting the Puzzle Together: An Exploration of "Oedipus the King" and "Turandot"
- Slouching Toward Woodstock: The Books We Read in (and About) The Sixties
- United States Constitutional Amendments: A Different Way of Studying United States History

LEAVENWORTH

- The Life and Wars of Robert E. Lee
- More Voices of the Willows

MANHATTAN

- King Coal in Kansas

OVERLAND PARK *(All Hybrid)*

- Advances in Medicine
- Climate Change: What Will Happen?
- Emotional Intelligence: What It Is and How to Increase It
- Exceptional Women Artists From Renaissance to Modern Times
- Health Care in America
- Hyphenated Rock
- Is the American Dream Dead?
- Kansans and the Experience of the Civil War (1861-65)
- Lady Clementine, Winston Churchill's Wife
- Middle Eastern and North African Cinema
- Travel to Hawaii

ROELAND PARK

- Adventures in Architecture: Frank Lloyd Wright

TOPEKA

- The Beatles Studio Years
- The Broadway Musicals of Lerner and Loewe
- Immigration: Irish, German and Italian Immigrants in 19th and 20th Century America
- A Personal Journey Down the Arkansas River and Its Impact on America's Heartland (1803 – present day)
- Thomas Edison: An American Genius
- The Young Generals of the American Civil War

ONLINE ONLY

- America the Beautiful: 50 States, 50 Tastes
- Bones and Stones
- Expressionism
- Finger Foods: Appetizers From Around the World
- From "Titanic" to "Napoleon" - The Best Film Music From the '90s Until Today
- Illustrating the West
- The Sacred Feminine and Odysseus
- Smartphone Filmmaking
- Synopsis of the Supreme Court and Electoral College

ALUMNI ASSOCIATION DISCOUNTS

Current members of the alumni associations at Kansas State University, Washburn University and the University of Kansas can receive a \$10 discount, once per semester, on any course. Does not apply to special events. Call 785-864-6779 for more information.



SPECIAL EVENT DESCRIPTIONS



JUNE 3-5, 2024

KU Mini College, a cherished annual three-day event, unites adult community members, alumni, and individuals worldwide on the KU Lawrence campus. Delve into a diverse agenda covering everything from Artificial Intelligence to bubblegum music to NCAA transfer portal and NIL and much more. Explore campus gems with guided tours (details closer to the event). Join us for an enriching experience, rediscover the campus, and reconnect with friends!

June 3 - 5, 2024

In Person

Slawson Hall
1420 Naismith Dr.,
Lawrence

Monday, June 3

7:45 a.m. - Registration opens at Slawson Hall in the Beren Conference Center, Lawrence Campus, 1420 Naismith Drive, Lawrence

8 a.m. - Doors open to the Beren Conference Center and coffee, tea and pastries are available

8:30-4:30 p.m. - Event sessions take place with an hour break for lunch

Tuesday, June 4

8 a.m. - Doors open to the Beren Conference Center and coffee, tea and pastries are available

8:30-4:30 p.m. - Event sessions take place with an hour break for lunch

Wednesday, June 5

8 a.m. - Doors open to the Beren Conference Center and coffee, tea and pastries are available

8:30-4:30 p.m. - Event sessions take place with an hour break for lunch

A pizza lunch will be provided one day (TBD) of the conference. The other days you will be on your own for lunch. To see a full listing of presentations, lodging and parking information, visit jayhawkglobal.ku.edu/ku-mini-college.

\$165 fee is for existing KU Osher Members and includes a light breakfast each morning, three days of presentations, special guided tours, and one pizza lunch.

\$190 fee is for Non-KU Osher Members and includes a light breakfast each morning, three days of presentations, special guided tours, one pizza lunch, and KU Osher Membership, which allows you to sign up for other KU Osher programming and includes access to numerous exclusive KU Osher benefits such as the KU Osher Speaker Series, the Artistic Exploration Club, the Book Club, and the KU Osher Outings.

Refunds will be honored on or before May 20, minus a \$30 administrative fee.

THREE EASY WAYS TO REGISTER FOR KU OSHER COURSES



Register Online

Visit us online at osher.ku.edu.



Register by Phone

Call our registration team at 785-864-6779.



Register by Mail

Complete the enclosed registration form and mail with a check or money order to: KU Jayhawk Global, 12600 Quivira Rd., Overland Park, KS 66213.
See registration page for more details

SPECIAL EVENT DESCRIPTIONS



“Fiddler on the Roof”

In partnership with Theatre Lawrence, we present “Fiddler on the Roof.” Join us for a musical theatre tradition! This is a tale of Tevye and his family in a changing Russia. The plight of traditional values in the face of changing social mores and ethnic prejudice cuts across barriers of race, class, nationality, and religion to touch audiences on a universal level with laughter, sadness, and joy. We’ll enjoy dinner and drinks before the show with an exclusive presentation from the show’s director, Mary Doveton.

Friday, June 21

6 p.m.

Pre-performance presentation and dinner

7:30 p.m.

Performance

Theatre Lawrence
4660 Bauer Farm Dr.
Lawrence, KS 66049

\$100 fee includes pre-performance presentation, dinner, drinks, and a ticket to the show.

\$55 fee for Theatre Lawrence ticket holders who wish to attend the pre-performance presentation and dinner.

Refund must be requested by June 7, minus a \$15 administrative fee.



Historic Kansas City Bus Tour

This guided tour takes us to scores of historic sites with photo stops. You’ll be treated to a first-person account by Octave Chanute, the engineer who designed and built the 1869 Hannibal Railroad Bridge. Learn about the man who mentored the Wright Brothers and has a town named in his honor. Explore sites like the Santa Fe Trail Ruts, Satchel Paige’s Grave, Case Overlook Park, the Missouri River Boardwalk, Lewis and Clark campsite, and others. Learn the stories behind KC’s 8th Street cable car tunnel, Quantrill, Union Station Massacre, KC’s first skyscraper, Thomas Swope and his murder, Nell Donnelly Reed’s company and her kidnapping, the Battle of Westport, political boss Tom Pendergast, the NFL’s longest game, and KC as the BBQ Capital of the World. We’ll enjoy lunch at Minsky’s Pizza located in the historic downtown City Market.

Friday, June 28

8 a.m.

Coach departs the KU Osher Institute, 1515 Saint Andrews Dr., Lawrence, and returns by 4 p.m.

9 a.m.

Coach arrives at Edwards Campus, 12600 Quivira Rd., Overland Park, and returns by 3 p.m.

\$115 fee includes coach transportation, tour guide, and lunch.

Refunds will be honored on or before June 7 minus a \$20 administrative fee.



Presidents and First Ladies

Special event presented by Brandon Woods at Alvamar.

KU Osher members are invited to attend a special event at Brandon Woods. From peanut farmer to Naval Officer, Governor of GA, and the Presidency, Jimmy had beside him his loving wife Rosalynn, who truly was Jimmy’s chief advisor and partner. His four years in office were filled with many controversial decisions and high points (peace between Israel and Egypt) and low points (Iran Hostages). Their post presidency saw them continue to do good work around the world well into their nineties. President Clinton said of the Carters, “No one has done more good things for more people than any other couple on the face of the earth.” This event is free to KU Osher members as a gift from our partner, Brandon Woods at Alvamar. Refreshments will be provided by Brandon Woods at Alvamar. Seating is limited.

Thursday, July 18

10 a.m. & 2 p.m.

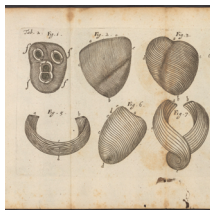
In-person

Brandon Woods at Alvamar
1501 Inverness Dr., Lawrence, KS

No admission fee, but reservations are required by completing the KU Osher registration form.

COURSE DESCRIPTIONS

Advances in Medicine



Join us as we delve into medicine from the past to learn how far we've come. We'll study modern medicine to learn how

we got to this point in treatment of certain conditions such as: congestive heart failure, atherosclerotic coronary, carotid, and peripheral arteries, and valvular heart disease. We'll also explore the advances in congenital heart disease.

Alan Forker

**Mondays, June 24, July 1 & 8
10 a.m.-noon**

In Person and Online

KU Edwards Campus
163 Regnier Hall
12610 Quivira Rd., Overland Park

America the Beautiful: 50 States, 50 Tastes



Come explore the delicious, unique flavors of New England, the Heartland, the Southwest and Pacific Coast.

There are 50 signature dishes and stories to be told and tasted. Bring your road map, turn up the radio and bring your appetite for a "sea to shining sea, purple mountain majesty, amber waves of grain" food adventure.

Larry Canepa

**Mondays, June 3, 10 & 17
2-4 p.m.**

Online

The Beatles Studio Years



By 1966, the Beatles grew tired of their grueling concert schedule often fraught with life-threatening audience

responses, and as their music moved from craft (perfecting the set formula) to art (creating novel music) they stopped performing live. What surprised many was that the studio recordings from 1967 to 1969 became even more revolutionary and influential.

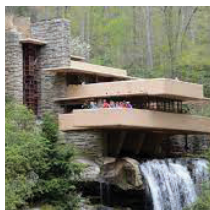
Steve Lopes

**Thursdays, July 18, 25 & Aug. 1
6:30-8:30 p.m.**

In Person

Washburn University
Henderson Learning Center 021
1700 SW College Ave., Topeka

Adventures in Architecture: Frank Lloyd Wright



Frank Lloyd Wright was an American artist who aimed to create a specifically American

architecture. In doing so, the single-story house, seen everywhere across the country, was his main artistic product. This course will introduce Wright, his work, and his influence, which surrounds many Americans in their daily lives.

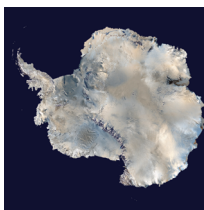
Vincent Clark

**Wednesdays, June 26, July 3 & 10
2-4 p.m.**

In person

Roeland Park Community Center
4850 Rosewood Dr., Roeland Park

Antarctica



According to historians, Antarctica was officially discovered in 1829 by Captain von Bellingshausen,

a German sailing under the flag of the Russian empire. Among the seven continents it is fifth in size but is the highest, driest, and coldest of all continents. It is of interest for economics, scientific research and exploration. We will discuss what life is like there, its beauty, and dangers as well as scientific allure.

**Ernie Angino, Gisela A.M.
Dreschhoff, Randy Van Schmus**

**Friday, Aug. 2
2-4 p.m.**

In Person

KU Osher Institute
1515 St. Andrews Dr., Lawrence

Bond. James Bond: 70 Years of Weapons, Women, and (foiled) World Domination



From the first novel "Casino Royale" in 1953 to the 25th "authorized" film "No Time to Die," many of us keep coming back to

the exotic locales, the Bond women, the latest devices from Q Branch, the supervillains with plans to conquer the world and their formidable enforcers. We'll look at the changes to Bond over the years, his cultural impact, and his continuing appeal.

Karl Menninger

**Fridays, July 26, Aug. 2 & 9
2-4 p.m.**

In person

Northland Innovation Center
6899 N. Oak Trafficway, 4th Floor
Gladstone, Missouri

COURSE DESCRIPTIONS

Bones and Stones



From Monument Rocks to Little Jerusalem, Historic Scott Lake, the Arikaree Breaks, Castle Rock, Mount

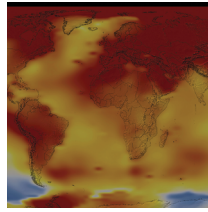
Sunflower, the Cimarron Grasslands—the geography of western Kansas includes landscapes, skylines, and amazing rock formations. Expert interpreters from paleontology and geology will join in the conversation as we explore the why and how this unique landscape was formed.

Deb Goodrich

**Wednesdays, June 26,
July 3 & 10
2-3:30 p.m.**

Online

Climate Change: What Will Happen?



Climate change is real and impacts from climate change are emerging. Despite the many efforts under way, we

are not winning the battle to save the planet. Our way of life is threatened and the choices we make now are important. The class will highlight current and potential future impacts to thwart climate change, discuss alternative actions we might take, and what might happen.

Charles “Chick” Keller

**Friday, June 14
10 a.m.-noon**

In Person and Online

KU Edwards Campus
163 Regnier Hall
12610 Quivira Rd., Overland Park

Energy



Energy has been an essential need of mankind from ancient times to the present, from the use of peat to nuclear power.

However, we must deal with the fact that sources are where nature put them. Each type of energy has its positives and negatives and its use as economic and political impact worldwide. Many of these facts are inseparable. We will discuss each type from past or present and their ramifications.

Ernie Angino

**Thursday, July 11
2-4 p.m.**

In Person

KU Osher Institute
1515 St. Andrews Dr., Lawrence

The Broadway Musicals of Lerner and Loewe



Alan Jay Lerner and Frederick Loewe formed one of the more distinctive writing teams working on Broadway

from the 1940s to the 1960s. Their four most important shows included “Brigadoon,” “Paint Your Wagon,” “My Fair Lady” and “Camelot.” This will be a look at the creation of these four shows and how the songs help tell the stories.

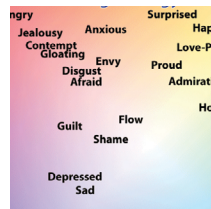
Paul Laird

**Tuesdays, June 11, 18 & 25
1-3 p.m.**

In Person (Open to the public)

Brewster Place
1205 S.W. 29th, Topeka

Emotional Intelligence: What It Is and How to Increase It



To deepen any relationship requires us to increase our emotional intelligence. Yet it is remarkable

how some people get entangled in each other’s emotions. This course offers personal insights into your own emotional intelligence and the emotional intelligence of others. Come learn how to recognize emotions and understand what triggers them.

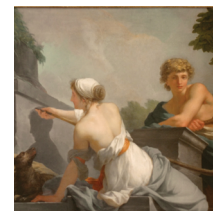
Don Booz

**Tuesdays, July 16, 23 & 30
10 a.m.-noon**

In Person and Online

KU Edwards Campus
163 Regnier Hall
12610 Quivira Rd., Overland Park

Exceptional Women Artists From Renaissance to Modern Times



Although women always have been artists, few are described as great. Historically excluded from art history records,

women were unable to pursue art education. Successful female artists were likely to have had husbands or fathers supporting them. This course explores seven exceptional female artists and their work from the Baroque to the present time.

Susan Pingleton

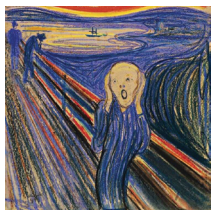
**Tuesday, June 18
10 a.m.-noon**

In Person and Online

KU Edwards Campus
163 Regnier Hall
12610 Quivira Rd., Overland Park

COURSE DESCRIPTIONS

Expressionism



The course considers the influences, aims, context, and legacy of one of the most iconic modern art movements.

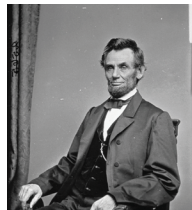
While the course focuses on Germanic painting, other examples of expressionist “expression” (e.g., literature and film) and centers of production (e.g., France, Scandinavia, and Russia) will also be examined.

Elijah Bures

**Mondays, July 15, 22 & 29
10-11:30 a.m.**

Online

A Forensic Study of Lincoln’s Assassination



We’ll study the surrender of Lee at Appomattox, the planning of the assassination, the care rendered to Lincoln, and

his final hours at the Peterson House. We’ll discuss autopsy findings, ballistics studies, the extent of brain damage, and his possible survival as well as the escape and death of John Wilkes Booth.

Daniel Cudnik

**Friday, June 14
1-2:30 p.m.**

In Person

KU Osher Institute
1515 St. Andrews Dr.,
Lawrence

The Generals’ Wives: How the Military Shaped the Role of First Lady



The role of first lady has evolved over the years and each first lady puts her own mark on the position. This course explores the

biographies of Martha Washington, Julia Dent Grant, and Mamie Doud Eisenhower and looks at how they enacted the role of first lady.

Diana Carlin

**Mondays, June 3, 10 & 17
2-4 p.m.**

In Person (Open to the public)

Senior Resource Center
for Douglas County
745 Vermont St., Lawrence

Finger Foods: Appetizers From Around the World



Appetizers were originally introduced by the Athenians in the early third century B.C. These finger foods,

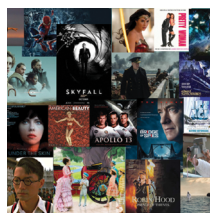
sometimes called hors d’oeuvres, antipasti, tapas, or starters, range from very simple to very complex. Put down the fork and knife and discover the history of the small, but delicious, world of finger foods.

Larry Canepa

**Wednesdays, July 17 & 24
10 a.m.-noon**

Online

From “Titanic” to “Napoleon” - The Best Film Music From the ‘90s until Today



We’ll explore what’s behind the best film scores in today’s evolving world. Anecdotes and superb audiovisuals

will introduce us to the artistic and business aspects of the music of Thomas Newman (“American Beauty”), Hans Zimmer (“Interstellar”), Rachel Portman (“Emma”), Justin Hurwitz (“La Land”) and more.

Emanuel Abramovits

**Wednesdays, June 5, 12 & 19
10 a.m.-noon**

Online

German Settlement and Culture in Kansas



German is the most prevalent language after English and Spanish spoken at home in 77 counties in

Kansas. Since 1854, thousands of German-speaking immigrants have sought better lives here, including Pennsylvania Dutch, Volga Germans, Mennonites, Austrians, and Swiss. German churches dot the prairie, and some rural Kansans still speak a dialect of German.

Bill Keel

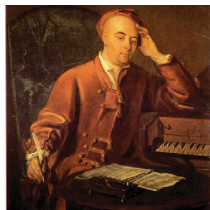
**Tuesdays, July 16, 23 & 30
9:30-11:30 a.m.**

In Person

Emporia Senior Center
603 E 12th Ave., Emporia

COURSE DESCRIPTIONS

Going for Baroque: Getting a Handle on Handel and Traveling Back to Bach



This course will be an introduction to the lives, times, and music of the two most famous composers from the late Baroque

period. The lives of Handel and Bach will be recounted through images, biographical details, and references to music-making and patronage in the first half of the 18th century.

Paul Laird

**Thursdays, June 6, 13 & 20
2-4 p.m.**

In Person

KU Osher Institute
1515 St. Andrews Dr., Lawrence

Health Care in America



This class looks at the emergence and transformation of the American health care system as it faced challenges such

as shifts in the nature of disease, unequal access to medicine, and escalating medical costs.

We'll examine medical and scientific discoveries of the 19th century and study the challenges to organized medicine that began in the 1960s as well as discuss contemporary health care issues.

Shirley Hill

**Wednesdays, June 5, 12 & 26
2-4 p.m.**

In Person and Online

KU Edwards Campus
163 Regnier Hall
12610 Quivira Rd., Overland Park

Hyphenated Rock



Rock and roll, a fusion of rhythm and blues and country music, gave rise to sub-genres like rockabilly,

soul, prog rock, and Motown. In this course we will explore the origins, impact, and influence of each type, illustrated with many musical examples. Please join the conversation.

Steve Lopes

**Tuesdays, June 25, July 2 & 9
2-4 p.m.**

In Person and Online

KU Edwards Campus
163 Regnier Hall
12610 Quivira Rd., Overland Park

Great American Statesmen



We'll focus on the career and achievements of 18th-century statesmen Benjamin Franklin and John Jay.

Next, we'll examine the careers of two 19th-century giants, Henry Clay and Daniel Webster. Finally, we move to the early 20th century and explore two American statesmen who occupied opposite sides of the political spectrum, Theodore Roosevelt and Woodrow Wilson.

Bob Smith

**Mondays, July 15, 22 & 29
6:30-8:30 p.m.**

In Person

KU Osher Institute
1515 St. Andrews Dr., Lawrence

High Performing Governance: Bridging the Gap between Politics and Administration



While government structures are designed to separate the arenas of politics and administration, nothing substantial gets done without

connecting what is politically acceptable and operationally sustainable. In contemporary environments, bridging this gap is becoming increasingly challenging. Being aware that politics revolves around four conflicting democratic values and that politics and administration are different mindsets facilitates working the gap.

John Nalbandian

Friday, June 21, 2-4 p.m.

In Person

KU Osher Institute
1515 St. Andrews Dr., Lawrence

Illustrating the West



From the works of Albert Bierstadt and Thomas Moran to Charlie Russell and Frederic Remington, to

the 19th-century illustrators like Theodore Davis, to the more modern artists like Phil Epp, Charlie Norton, Thom Ross, Wilson Hurley, and Harvey Pratt, we'll explore how the West has been portrayed and interpreted through art. Some of the artists will join our discussion.

Deb Goodrich

**Wednesdays, July 17, 24 & 31
2-3:30 p.m.**

Online

COURSE DESCRIPTIONS

Immigration: Irish, German and Italian Immigrants in 19th and 20th Century America



What caused massive numbers of Irish, Germans, and Italians to come to our shores in the 19th and early 20th

centuries? What was the reaction of the native-born to these strangers? To what extent did the newcomers try to stick together, blend in, advance or return to their old country? What contributions did these immigrants and their offspring make to this country?

Carl Graves

**Fridays, July 12, 19 & 26
1-3 p.m.**

In Person

Jayhawk Area Agency on Aging
2910 SW Topeka Blvd., Topeka

An Introduction to Marine Biology for Non-Scientists



Join us to study the physical and chemical features of oceans (e.g., tides and salinities) and learn about the estuarine

animal and plant communities. We'll examine ecology of rocky intertidal habitats (e.g., U.S. West Coast) and discuss sandy shore communities. Finally, we'll delve into offshore habitats, to include coral reefs and shallow and deep-water organisms.

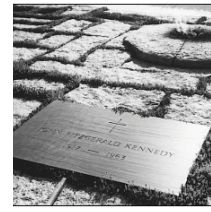
James (Jim) Thorp

**Mondays, June 24, July 1 & 8
2-4 p.m.**

In Person

KU Osher Institute
1515 St. Andrews Dr., Lawrence

The JFK Assassination: 60 Years Later



We will examine the political and social climate of the early 1960s, the circumstances involved in the assassination of

President John F. Kennedy on Nov 22, 1963 and the major theories as to who was likely behind the assassination. We will utilize numerous photographs which were not available to the public in 1963. We will conclude with an in-depth examination of an eyewitness, who was ignored by the federal government, who observed a man shoot at the President from behind a picket fence.

Brian Edwards

**Tuesdays, June 25, July 2 & 9
6:30-8:30 p.m.**

In Person

KU Osher Institute
1515 St. Andrews Dr., Lawrence

IT PAYS TO HAVE FRIENDS

We're looking for lifelong learners who value intellectual engagement and social connection. Encourage a friend or family member to enroll in their first three-week KU Osher course for an introductory price of \$15 and you receive 50% off one KU Osher course (does not include special events). The person must be new to KU Osher or have not taken classes since June 1, 2019. All discounts must be used by April 30, 2024.

Take advantage of this great offer! To refer a friend or family member email osher@ku.edu.

Is the American Dream Dead?



The American dream and hope of "leading a better, happier, richer life than your parents regardless of the circumstances of

your birth" has energized Americans throughout our history. Today, many Americans are challenged to pay their bills, find decent housing, and obtain health insurance. Today's high level of income inequality has led people to believe the American Dream is dead for many. The class will review what happened and how we might fix it.

Charles "Chick" Keller

**Thursday, July 18
10 a.m.-noon**

In Person and Online

KU Edwards Campus
163 Regnier Hall
12610 Quivira Rd., Overland Park

Kansans and the Experience of Civil War, 1861-65



From 1861-65, the border struggle heated up as Kansans fended off Confederate attacks, welcomed the formerly

enslaved into their communities, and engaged in bitter political debates. Men of all backgrounds served in uniform, while women managed farmsteads and formed societies to help the needy. We'll recreate the experiences of Kansans and their frontier communities during this pivotal period.

Will Haynes

**Mondays, June 3, 10 & 17
10 a.m.-noon**

In Person and Online

KU Edwards Campus
163 Regnier Hall
12610 Quivira Rd., Overland Park

COURSE DESCRIPTIONS

King Coal in Kansas



We'll explore the development of sub-surface coal mining in Crawford and Cherokee counties, making

them the center of "King" Coal and resulting in milestones such as Pittsburg reaching 50,000 residents and UMWA membership exceeding 16,000, making it the world's zinc smelting capital. We'll also examine the emergence of area tycoons such as Mackie, Clemmons, and Spencer.

Ken Crockett

**Wednesdays, July 17, 24 & 31
3:30-5:30 p.m.**

In Person

Riley County Seniors' Service Center
301 N. 4th Street, Manhattan

Lady Clementine



Lady Clementine, wife of the renown Winston Churchill, was more than just the wife of a world leader. She was an influential

political figure in her own right. She had insight, courage, and tenacity which proved crucial during pivotal moments in history. Clementine's story is one of a woman's ferocity and ambition through political unrest during two world wars.

Marlene Katz

**Wednesday, June 26
10 a.m.-noon**

In Person and Online

KU Edwards Campus
163 Regnier Hall
12610 Quivira Rd., Overland Park

Making Tracks: American Railroads Then and Now



We'll explore the economic, political, and cultural impact of U.S. railroad corporations, passenger, and

freight trains, as well as workers who built, ran, and maintained them. Focusing on years from the Civil War to the present, the class emphasizes not only the Union Pacific-Central Pacific transcontinental route, but also lines in Kansas and Kansas City like the Santa Fe and the Rock Island.

Carl Graves

**Tuesdays, June 4, 11 & 18
2-4 p.m.**

In Person

Eudora Community Museum
720 Main St., Eudora

The King of Swing



Experience the musical magic of jazz clarinetist and swing bandleader Benny Goodman. In the 1930s, Goodman led the

popular dance band in America. His tenure culminated with a landmark performance in Carnegie Hall that elevated jazz to an art form. Discover why Goodman's musicianship was celebrated with accolades that included national lifetime achievement awards and his star on the Hollywood Walk of Fame.

Jean Hein

**Thursday, June 20
6:30-8:30 p.m.**

In Person

KU Osher Institute
1515 St. Andrews Dr., Lawrence

The Life and Wars of Robert E. Lee



We'll explore Robert E. Lee's life and study how he became one of the most respected officers in the U.S. Army, only to

forge a record in the Confederacy that made him one of the most respected commanders in history. We'll discuss the factors that shaped his generalship both in victory and defeat.

Ethan Rafuse

**Wednesdays, June 26, July 3 & 10
6:30-8:30 p.m.**

In Person

KU Leavenworth Campus
TownPlace Suites, 1001 N. 4th St.,
Leavenworth

THANK YOU!

A special thank you to the **Bernard Osher Foundation**. Established in 1977 by its namesake Bernard Osher, the foundation supports a network of 125 Osher Lifelong Learning Institutes across the U.S. to meet the needs of older learners who want to learn simply for the joy of it. Since 2007, the Foundation has awarded two \$1 million endowed grants to KU Jayhawk Global. To learn more visit osherfoundation.org.

COURSE DESCRIPTIONS

Middle Eastern and North African Cinema



Explore the various aspects of the cultures, religions, and the set values of the Middle East and North Africa through cinema.

We'll learn about urban settings of the Arab World, mass media, gender dynamics, social interactions, and politics in the region. We'll study the many ways in which the "East" has had a formative and foundational impact on conceptions of "self" and "other." We will rely on both readings and films to understand the complexities and nuances of several topics related to the Middle East and North African cinema.

Asmaa Benbaba

Tuesdays July 16, 23 & 30, 2-4 p.m.

In Person and Online

KU Edwards Campus - 163 Regnier Hall
12610 Quivira Rd., Overland Park

A Personal Journey Down the Arkansas River and Its Impact on America's Heartland (1803 - present day)



We will explore this heavily regulated river from beginning to end. From raging rapids to diversion dams for

irrigation ditches, to dry streambeds, and finally barge traffic, we will examine the impact this wild, elusive, and embattled river has had on cities, towns, and adjacent farmland, starting with the Louisiana Purchase in 1803 to the present day.

Hannes Zacharias

**Wednesdays, June 12, 19 & 26
6-8 p.m.**

In Person

Jayhawk Area Agency on Aging
2910 SW Topeka Blvd., Topeka

The Sacred Feminine and Odysseus



We are most familiar with the Odyssey as a classic hero's journey. Though this epic has many layers to it, the

purpose and presence of the sacred feminine is one layer that has been overlooked. This course traces the role of the sacred feminine in helping Odysseus return home through each female character, revealing the true character and purpose of each.

Shari Tarbet

**Thursdays, July 18, 25 & Aug. 1
1-3 p.m.**

Online

More Voices of the Willows



We'll explore the early 20th century world of adoption in Kansas City and share adoptees' and birth mothers' heartwarming and

sometimes heart wrenching stories. Ranging from 1908 until 1969, these voices express the common need to know "Who am I?" and longing for medical history, fear of hurting adoptive parents, and guilt for being forced to give up a baby. One voice is of a Willows baby who grew up to be the governor of Kansas.

KelLee Parr

**Wednesdays, July 17, 24 & 31
2-4 p.m.**

In Person

Leavenworth Council on Aging
711 Marshall St., Suite 100,
Leavenworth

Putting the Puzzle Together: An Exploration of "Oedipus the King" and "Turandot"



University of Kansas Visiting Assistant Professor of Classics Cecilia Cozzi and Lyric Opera of Kansas City Director of

Learning Neal Long explore two iconic works (Sophocles' "Oedipus the King" and Puccini's "Turandot") and their common elements: the notion of a quest, the presence of riddles, and the importance of identity.

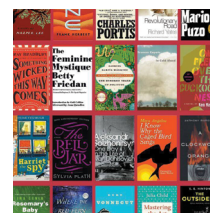
Cecilia Cozzi and Neal Long

**Monday, June 10
6:30-8:30 p.m.**

In Person

KU Osher Institute
1515 St. Andrews Dr., Lawrence

Slouching Toward Woodstock: The Books We Read in (and about) The Sixties



We'll look at books that explored politics, drugs, expanding consciousness, feminism, the sexual revolution,

and the Vietnam War and discuss how accurately they reflect that time 60 years later. Books discussed include: "The Making of the President 1960," "The Electric Kool-Aid Acid Test," "The Greening of America, Dispatches, Slouching Toward Bethlehem," "Helter Skelter," "Fear and Loathing in Las Vegas," and "One Flew Over the Cuckoo's Nest."

Karl Menninger

**Mondays, July 15, 22 & 29
2-4 p.m.**

In Person

KU Osher Institute
1515 St. Andrews Dr., Lawrence

COURSE DESCRIPTIONS

Smartphone Filmmaking



With the help of an inexpensive app, we can shoot and edit film-quality videos with our smartphones.

Design the look, color, lighting and framing of every single shot.

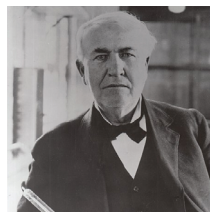
Note: Students will be required to purchase and install the Filmic Pro app. It can be purchased through either the Google Play Store (Android) or through the App Store (iPhone).

Stephen Knifton

**Tuesdays, July 16, 23 & 30
6:30-8:30 p.m.**

Online

Thomas Edison: An American Genius



How did a boy from a small town in Ohio, having very little formal education and attending school for only a few months,

become the most prolific inventor of the 19th and early 20th century? We'll seek the answer to this question and study the impact that this genius continues to exert on our lives today.

Paul Post

Thurs., June 27, July 11 & 18, 2-4 p.m.

In Person

Northland Innovation Center
6899 N. Oak Traffic Way, 4th Floor
Gladstone, MO

Tues., June 25, Jul 2 & 9, 2-4 p.m.

In person

Aldersgate Village
7220 SW Asbury Dr., Topeka

United States Constitutional Amendments: A Different Way of Studying United States History



Join us in studying the background of the constitutional amendment process and how these modifications

to the U.S. Constitution reflect the times in which they were ratified. An example will be given from the U.S. Foundation Era (Bill of Rights). Other examples are from the U.S. Reconstruction, Progressive and Modern periods.

Anita Tebbe

**Thursdays, June 6, 13 & 20
10 a.m.- noon**

In Person

KU Osher Institute
1515 St. Andrews Dr., Lawrence

Synopsis of Supreme Court and Electoral College



We'll explore controversial elections between 1800 and 2020 discuss how the Electoral College works differently

from the popular vote. We'll examine the Supreme Court's intervention in 1876 and the election outcome of the 2000 Bush v. Gore decision. Come join us as the information on the Court and College may impact the 2024 election.

Russ Hutchins

**Wednesdays, June 26, July 3 & 10
7-8:30 p.m.**

Online

Travel to Hawaii



We begin with the history of Hawaii from its Polynesian roots back to the eighth century and learn how it evolved to a U.S.

Territory and then statehood in 1959. We'll explore things to do on Oahu, including Pearl Harbor and the recent changes there. Then learn about Honolulu and the islands of Maui and Kauai, and maybe even look at Molokai and Lanai. We'll end with the Big Island and explore the history and places to see.

Georgia Klein

**Tuesdays, June 25, July 2 & 9
10 a.m. - noon**

In Person and Online

KU Edwards Campus
163 Regnier Hall
12610 Quivira Rd., Overland Park

The Young Generals of the American Civil War



We'll focus on the generation of young leaders who served. We'll examine the military exploits of Western

Theater generals William T. Sherman, Benjamin Grierson, Judson Kilpatrick, and John Schofield. Then we turn to the Eastern Theater to study Union generals Winfield Hancock, John Gibbon, George McClellan, Alfred Pleasonton, and Joshua Chamberlain. Finally, we learn about George Custer, Philip Sheridan, and Darius Couch.

Bob Smith

**Tuesdays, July 16, 23 & 30
1-3 p.m.**

In Person (Open to the public)

Brewster Place
1205 S.W. 29th St., Topeka

INSTRUCTOR BIOGRAPHIES

Emanuel Abramovits has been a concert promoter since 2000, directly involved in many concerts by international artists, like Itzhak Perlman, Sarah Brightman, ASIA, Kenny G, and many more. He served as the cultural director at UNION ISRAELITA DE CARACAS from 2008 to 2019, releasing books, organizing film cycles, concerts, and art exhibits.

Ernest Angino is a retired professor of geology and civil engineering at the University of Kansas. He has spent more than 45 years studying energy resources and Antarctic geochemistry. Among his honors is the Angino Buttress, a mountain range in Antarctica. He has also worked in radiation science that led to the development of the Lithium Fluoride Dosimeter.

Kristen Baum is the director of Monarch Watch and senior scientist and professor at the University of Kansas. She has worked with pollinators for more than 30 years. Her research interests focus on the effects of land use and management practices on monarchs and other pollinators.

Asmaa Benbaba is an Arabic and Islamic studies lecturer for the African and African American studies department. She earned her doctorate in adult and continuing education and master's in urban and community planning from Auburn University and an additional degree in cultural studies and bachelor's in English literature from Mohamed V University in Morocco. Dr. Benbaba's research interests include online learning communities, online distance education learning environments in the foreign language classrooms, and the incorporation of cultural forms (films, literature, space, built environment, music, and popular culture) in second language teaching and learning. Further teaching interests include Middle Eastern and North African sub-cultures, gender, and diaspora.

Don Booz is widely recognized for his coaching expertise in the Kansas City area and his ability for helping people increase their emotional intelligence. He is a professional certified coach who teaches people how to develop their emotional intelligence with increased self-awareness.

Elijah Bures holds a doctorate in history from UC Berkeley. He is a fellow at Berkeley's Center for Right-Wing Studies and the author of multiple essays and scholarly articles on far-right politics.

Jeffrey M. Burns, M.D., M.S. is the co-director of the University of Kansas Alzheimer's Disease Research Center. Dr. Burns completed medical school at the University of Kansas Medical Center, neurology residency at the University of Virginia, and a post-doctoral fellowship in Alzheimer's at Washington University in St. Louis. In 2004 he returned to his hometown of Kansas City to start the Alzheimer's program to stimulate research locally while pursuing research investigating how lifestyle factors influence brain aging and Alzheimer's.

Chef **Larry Canepa** is a certified culinary educator with over 40 years of food and beverage experience and 20 years of teaching cooking, food and culture, and STEAM-focused classes. He has taught culinary classes at Le Cordon Bleu, the International Culinary School at the Art Institute, corporate wellness events, libraries, community centers, and other venues.

Diana Carlin, Ph.D., is professor emerita of communication at Saint Louis University and a retired professor of communication studies at KU. Carlin has written several articles and co-authored a book on gender and politics. She also taught courses on women as political leaders, the rhetoric of women's rights, and communication and gender.

Vincent Clark holds a doctorate in modern European history. His graduate work included a Fulbright Graduate Fellowship at Germany's University of Heidelberg. He was history professor and chair of the history department at Johnson County Community College and has published articles and books in his field.

Cecilia Cozzi is a visiting assistant professor at the University of Kansas. She got her doctorate from the University of Cincinnati in 2023 with a thesis on psychoanalytical frameworks applied to inheritance on the tragic stage. Her primary research interest is Greek Tragedy and its reception.

Ken Crockett was born into a second-generation family of coal miners. He was educated at Central Missouri State University (bachelor's degree) and Washburn University of Law (Juris Doctor). He is the author of two books related to Kansas mining -- "Missouri Coal Miner's Strike" and "Kenneth and Helen Spencer, Champions of Culture & Commerce in The Sunflower State."

Daniel Cudnik is a retired board-certified plastic surgeon. He formerly served as president of the medical staff and sat on various boards of trustees. He has a passion for history and shares his knowledge with others, actively presenting for civic groups on historical topics mixing medicine with history.

Gisela A.M. Dreschhoff has spent a total of 20 field seasons in both polar regions, Antarctic, and Greenland, studying the effects of solar particles on the polar atmosphere which leaves a signature in the ice to be studied in ice cores. Some of her honors include a mountain peak in Antarctica named the Dreschhoff Peak. She has been named Fellow of The Explorers Club and currently she has an adjunct appointment in geology and physics/astronomy at KU.

INSTRUCTOR BIOGRAPHIES

Brian Edwards has been researching the Kennedy assassination for five decades. During that time, he has personally interviewed hundreds of individuals connected with the case. He has given numerous presentations on the assassination throughout the United States. He is co-author of three books on the assassination -- "Beyond the Fence Line: The Eyewitness Account of Ed Hoffman and the Murder of President John Kennedy" (2008), "Blueprint for Murder" (2020), and "Admitted Assassin" (2024). In 2019, he collaborated with and appeared in Oliver Stone's 4-hour documentary on the assassination, "JFK Revisited: Through the Looking Glass."

Alan Forker received bachelor's & doctor of medicine degrees from the University of Kansas. After 12 years in private practice of cardiology, he spent 32 years in academic medicine, and the last 26 at UMKC. He published 82 articles in medical literature and co-edited two books. He was elected Master of the American College of Physicians.

Alisha Gridely is the executive director of CityArts with the vision to extend outreach through exciting and interactive arts programming that intentionally brings Wichita's diverse cultures together to learn, inspire, and start important conversations. She believes that sharing our creativity is a powerful way to strengthen our community. Alisha has earned a Bachelor of Fine Arts from McPherson College and a Master of Fine Arts from Full Sail University.

Deb Goodrich, the host of the TV show "Around Kansas," and the Garvey (Texas) Foundation Historian in Residence at the Fort Wallace Museum, chairs the Santa Fe Trail 200. She has appeared in many documentaries including "The Road to Valhalla," "Aftershock," and "American Experience" on Jesse James, and the series, "Gunslingers" on AHC. She wrote and produced the docudrama, "Thof's Dragon."

Carl Graves, Ph.D., holds a master's degree in U.S. history from KU and a doctorate from Harvard. He taught at the university and community college levels, and at Kansas City's Pembroke Hill School.

Will Haynes has a doctorate in history from the University of Kansas. He plans, manages, and promotes public programming at the Watkins Museum of History, the headquarters of the Douglas County Historical Society.

Jean Hein recently moved to Kansas from South Carolina, where she was director and recorder performer with Columbia Baroque as well as a clarinetist. She currently teaches online recorder classes for seniors. Hein has served on the Board of Early Music America. She holds music degrees from Oberlin Conservatory and Northwestern University.

Shirley Hill holds a doctorate in sociology and was a professor at the University of Kansas until she retired in 2017. She has written several books and has taught classes in medical sociology, social inequality, and families.

Russ Hutchins teaches U.S. history, Western civilization, economics, business, philosophy, and business management at Friends University. He is a retired public-school administrator and educator.

Marlene Katz, a graduate from the University of Missouri, was an adjunct professor at UMKC, where she taught English and literature. Marlene has a 28-year teaching career and has been involved in storytelling for 20 years. "Women in History" is her specialty and Marlene has performed in a five-state area and has lectured at various groups, often in costume and speech of the character she is portraying.

William Keel, Ph.D., is a professor emeritus of German at KU, having taught the history and culture of German settlements in Kansas and Missouri.

Charles "Chick" Keller is a retired senior executive and retired professor. He worked 15 years each at Sprint, and Black and Veatch in strategic planning and strategic marketing rising to VP level both times. In 2000, he began a career as a professor in KU's engineering management program where he taught finance and strategic planning.

Georgia Klein is a retired educator from the Shawnee Mission School District. Her love of Kansas City history led her to develop the tour as a business. The last four years she has been doing the walking tour as part of Road Scholar tours of Kansas City.

Stephen Knifton is an Emmy-winning TV news producer, creating and producing engaging and highly rated news programming. Steve also created work for museums, engineers, architects, designers, hospitality + tourism, and business development clients. He has taught (remotely) video storytelling and smartphone filmmaking at several colleges and has lived and worked in New York and Toronto, distance-teaching in Canada and the U.S.

Paul Laird is professor of musicology at the University of Kansas, where one of his teaching specialties is music of the United States. He has published widely on such topics as Leonard Bernstein and American musical theater and won the 2021 KU Chancellor's Club Career Teaching Award. Laird has taught many KU Osher classes since the program's inception at KU.

Neal Long serves as director of learning at Lyric Opera of Kansas City where he oversees the company's programs of education and community engagement. Neal received his DMA from the University of Kansas in 2021 and enjoys a varied career as a singer, pianist, educator, and arts administrator.

INSTRUCTOR BIOGRAPHIES

Steve Lopes, A.E., B.A., M.A., M. Ed., was an educator for 15 years prior to 30 years of advocating for teachers as a Kansas-NEA organizer. He enjoys researching rock 'n' roll history and sharing it with KU Osher participants.

Karl Menninger is retired from a legal career in federal and state government, mostly dealing with issues concerning persons with disabilities. He teaches courses on disabilities and the law and insanity defense at the University of Missouri - Kansas City School of Law.

John Nalbandian, professor emeritus, served for eight years on the Lawrence city commission including two terms as mayor. He is former director of the nationally recognized public administration program at KU and has received numerous awards for his teaching, research, and service.

Bill Nicks has been conducting Historic Kansas City Bus Tours since 2009. After three years in the U.S. Army, he received a bachelor's from Washburn and a master's from KU. He also performs five first-person historical re-enactments: Octave Chanute, Wilbur Wright, James Naismith, IKE Eisenhower and Tom Pendergast. In 2017, he was elected to the Lenexa City Council and re-elected in 2021.

Kellee Parr holds bachelor's degrees in agriculture and education plus a master's degree in adult and occupational education from Kansas State University. He has taught elementary school for many years in Topeka and now writes science curriculum for Nancy Larson Publishers.

Susan Pingleton, M.D., is professor emerita at the University of Kansas Medical Center, where she was a clinician-educator. Her interests include art and art history. She is involved in local art organizations, including KC/Arts, the Nelson-Atkins Museum of Art, and a member of the art committee at KU Med.

Paul Post, a native Kansan, received a bachelor's in history from KSU and a law degree from the KU Law School in 1974. Now retired from the practice of law, he is a member of the Shawnee County Historical Society and an amateur beekeeper. He has authored essays on the history of SBA Hill/ former Menninger Campus in Topeka; Topeka's Bates Family; The Fred Harvey Company; and on Duke Ellington.

Ethan S. Rafuse has many published works including, "Robert E. Lee and the Fall of the Confederacy, 1863-1865." He received his doctorate at the University of Missouri-Kansas City and teaches military history at the U.S. Army Command and General Staff College at Fort Leavenworth.

Robert Smith, Ph.D, is the director of the Fort Riley Museum. He has a doctorate in history from KSU and has published numerous articles on military history.

Shari Tarbet has been an educator for over 30 years, she holds a master's and doctorate in mythological studies and depth psychology from Pacifica Graduate Institute, and a bachelor's in english/ history education, and BSJ broadcast journalism from University of Kansas. Her writings and lectures cover a wide variety of topics on myth, dreamwork, the Bill of Rights, and the sacred feminine.

Anita Tebbe is a retired professor of the legal studies department at Johnson County Community College. She earned an undergraduate degree in history, a graduate degree in education and a juris doctor degree in law. Anita is a Kansas licensed attorney and has more than 40 years at the high school and college levels.

James (Jim) Thorp is an aquatic ecologist who retired at the end of 2023 from the University of Kansas and is now an emeritus professor in the Department of Ecology and Evolutionary Biology and is also associated with the Kansas Biological Survey and Center for Ecological Research. He has published over 150 journal articles and 11 books on aquatic subjects.

Randy Van Schmus is a retired KU geology professor (1967-2007). His specialty is measuring ages of old rocks, and he has done research in Africa, Antarctica, Brazil, Canada as well as the U.S.A. He also did research on meteorites while in the USAF.

Ketty Wong holds membership in the Ecuadorian National Academy of History and serves as an associate professor specializing in ethnomusicology at the University of Kansas. Her research interests include Latin America art, popular, and folk music, as well as issues of identity, nationalism, globalization, and the reception of Western social dances in China.

Hannes Zacharias is the Robert A. Kipp Professor of Practice for the KU School of Public Affairs and Administration following a 35-year career in local city and county government administration. He has served as city manager of Boonville, Mo., Hays, Kansas., and county manager for Johnson County, Kansas.

THANK YOU INSTRUCTORS

The strength of our program is found in our dynamic instructors with a passion for teaching and a strong dedication to KU Osher members. Thanks for your commitment to lifelong learning. You inspire us! We are always looking for instructors. If you or someone you know would like to teach, email us at osher@ku.edu.

POLICIES & PROCEDURES

Class Cancellation

Although unlikely, a class may be canceled due to low enrollment or other circumstances beyond the Institute's control. Members will be notified by email and have the option to transfer their registration to another course, donate their fee, or request a refund.

Refund Policy

If there is no stated deadline, a written or emailed request (jayhawkglobal@ku.edu) for a refund will be honored up to one week before a course or special event begins. There will be a \$5 administrative fee for all courses. Special event refund fees vary per event. A \$30 fee will be charged for returned checks.

Privacy Policy

KU Osher Lifelong Learning Institute at the University of Kansas does not share, sell, or rent its mailing lists. You have our assurance that any information you provide will be held in confidence by the Institute.

We occasionally use mailing lists that we have leased. If you receive unwanted communication from the Institute, it is because your name appears on a list we have acquired from another source. In this case, please accept our apologies.

Program Accessibility

We accommodate persons with disabilities. Please call 785-864-6779 to be connected to someone who can assist. To ensure accommodation, please register at least four weeks before the start of the class. See the nondiscrimination policies that follow.

University of Kansas Nondiscrimination Policy

The University of Kansas prohibits discrimination on the basis of race, color, ethnicity, religion, sex, national origin, age, ancestry, disability, status as a veteran, sexual orientation, marital status, parental status, gender identity, gender expression, and genetic information in the university's programs and activities. Retaliation is also prohibited by university policy. The following persons have been designated to handle inquiries regarding the nondiscrimination policies and are the Title IX coordinators for their respective campuses: Director of the Office of Civil Rights and Title IX, civilrights@ku.edu, Room 1082, Dole Human Development Center, 1000 Sunnyside Avenue, Lawrence, KS 66045, 785-864-6414, 711 TTY (for the Lawrence, Edwards, Parsons, Yoder, and Topeka campuses); Director, Equal Opportunity Office, Mail Stop 7004, 4330 Shawnee Mission Parkway, Fairway, KS 66205, 913-588-8011, 711 TTY (for the Wichita, Salina, and Kansas City, Kansas medical center campuses).

Zoom Course Participation

An individual registration is required for each person, as Zoom links are not to be shared.

Individuals with disabilities are encouraged to attend University of Kansas sponsored events. If you require a reasonable accommodation in order to participate in an event, please email jayhawkglobal@ku.edu or call 785-864-6779 at least four weeks before the first day of the event. Some events may require notice earlier than four weeks and require you contact a specific individual; if so, that information is provided in the event specific information.

VOLUNTEER LEADERSHIP OPPORTUNITIES

Looking to be more involved outside of your classroom experience? We are seeking committed, engaged KU Osher participants to join us and volunteer your time, talent, expertise and/or resources to help us grow. Reach out to osher@ku.edu for more information.

Marketing and Outreach Committee

How can we get the word out about KU Osher? Who can we partner with to expand our offerings? Where do we find new members? How do we re-engage with previous members? We welcome your ideas and suggestions on how to spread the word about the KU Osher Institute.

Program Development Committee

Are you willing to brainstorm on how to attract new instructors? Do you have ideas for course topics we have not taught before? Are you excited about the thought of helping us discover intriguing events? If so, please join us as we explore new possibilities.

Resource Development Committee

If you see the value of the KU Osher Lifelong Learning Institute and want to share your passion with others, and you're interested in helping us create a sustainable program rich in resources to enhance program offerings, then we need your help. Connecting us with individuals and organizations who can financially support our program is a much-needed role.

If you have been positively impacted by the KU Osher program, please consider giving back in this way and volunteering for a committee. Thank you!

KU OSHER FEES

The KU Osher Institute strives to keep fees as low as possible to help ensure more individuals are able to afford courses. Participants have the ability to enroll in three-week courses for a \$50 per course registration fee. We also offer one-day courses for a \$25 per course registration fee. The cost of special events varies.

HOW TO SUPPORT THE KU OSHER INSTITUTE

1. Make a special financial gift to help the KU Osher Institute recover from COVID-19. Your gift is tax deductible. Call 888-653-6111, or give online at kuendowment.org/osher.
2. Enroll in several KU Osher courses

Refer your friends! See details on Page 14.

GIVE THE GIFT OF KNOWLEDGE - KU OSHER GIFT CARDS

A gift card to the KU Osher Lifelong Learning Institute at KU offers a unique opportunity to enrich the life of that special someone, a family member or good friend. With a KU Osher Institute gift card, you open the worlds of art, music, science, history, and a wide variety of special events.

A \$50 gift card allows your recipient an opportunity to enroll in one of KU Osher's courses specially developed for folks 50 or better. No homework. No tests. No pressure. It's learning just for the joy of it!

With your gift order, the recipient will receive a handsome card announcing your gift and acknowledging you as the donor (you can give anonymously, too). A catalog will follow shortly thereafter listing the forthcoming courses and events.

KU Osher gift cards are a unique gift idea that are easy and fun. Celebrate Mother's Day, Father's Day, Grandparents' Day, graduation, birthdays, etc. by sharing the love of learning.

Call today!
785-864-6779



WHAT MEMBERS ARE SAYING

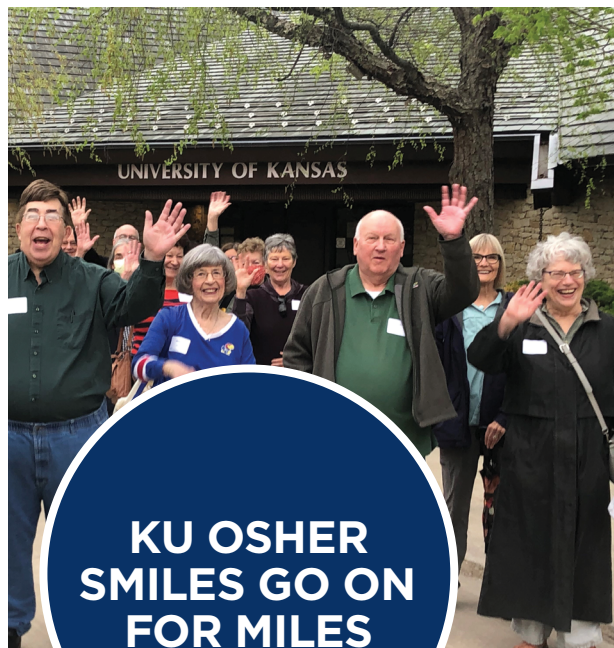
“
These classes
are worth every
penny.
”

“
I am very happy
to make this
donation. Osher
is a true gift to
me at this stage
of my life!
”

“
The instructor’s
diligent
preparation and
caring attitude
illustrate a deep
felt commitment.
”

“
The courses are
wonderfully rich
and engagingly
presented.
”

“
The instructor is
terrific. All the
young people
in our country
should hear her.
”



**KU OSHER
SMILES GO ON
FOR MILES**



PART I KU OSHER SUMMER 2024 REGISTRATION (one registration form per person)

A. TELL US ABOUT YOURSELF (please print)

Full name (First, MI, Last, Suffix) _____ Preferred name _____
 Email _____ Daytime phone _____
 Address _____ City, State Zip code _____
 Date of birth _____ Male Female
 Are you a U.S. Citizen? Yes No If no, country of citizenship _____
 Name of my residential community, if applicable _____

B. COURSES Abbreviated courses can be found on pages 7-14. A \$25 KU Osher membership must be paid to take classes.

| Title | In-person | Online | Start Date |
|---|--------------------------|--------------------------|------------|
| Clay County, Missouri <small>(Clay County residents \$15. Open to public.)</small> | | | |
| Bond. James Bond: 70 Years of Weapons, Women and (foiled) World Domination | <input type="checkbox"/> | | July 26 |
| Thomas Edison: An American Genius | <input type="checkbox"/> | | June 27 |
| Emporia | | | |
| German Settlements and Culture in Kansas | <input type="checkbox"/> | | July 16 |
| Eudora | | | |
| Making Tracks: American Railroads Then and Now | <input type="checkbox"/> | | June 4 |
| Lawrence | | | |
| Antarctica <small>(one day)</small> | <input type="checkbox"/> | | Aug 2 |
| Energy <small>(one day)</small> | <input type="checkbox"/> | | July 11 |
| Forensic Study of Lincoln <small>(one day)</small> | <input type="checkbox"/> | | June 14 |
| The Generals' Wives | <input type="checkbox"/> | | June 3 |
| Going for Baroque | <input type="checkbox"/> | | June 6 |
| Great American Statesmen | <input type="checkbox"/> | | July 15 |
| High Performing Governance <small>(one day)</small> | <input type="checkbox"/> | | June 18 |
| Introduction to Marine Biology | <input type="checkbox"/> | | June 24 |
| JFK Assassination | <input type="checkbox"/> | | June 25 |
| King of Swing <small>(one day)</small> | <input type="checkbox"/> | | June 20 |
| Putting the Puzzle Together <small>(one day)</small> | <input type="checkbox"/> | | June 10 |
| Slouching Toward Woodstock | <input type="checkbox"/> | | July 15 |
| United States Constitutional Amendments | <input type="checkbox"/> | | June 6 |
| Leavenworth | | | |
| Life and Wars of Robert E. Lee | <input type="checkbox"/> | | June 26 |
| More Voices of the Willows | <input type="checkbox"/> | | July 17 |
| Manhattan | | | |
| King Coal in Kansas | <input type="checkbox"/> | | July 17 |
| Overland Park | | | |
| Advances in Medicine | <input type="checkbox"/> | <input type="checkbox"/> | June 24 |
| Climate Change | <input type="checkbox"/> | <input type="checkbox"/> | June 14 |
| Emotional Intelligence | <input type="checkbox"/> | <input type="checkbox"/> | July 16 |
| Exceptional Women Artists <small>(one day)</small> | <input type="checkbox"/> | <input type="checkbox"/> | June 18 |
| Health Care in America | <input type="checkbox"/> | <input type="checkbox"/> | June 5 |
| Hyphenated Rock | <input type="checkbox"/> | <input type="checkbox"/> | June 25 |
| Is the American Dream Dead? <small>(one day)</small> | <input type="checkbox"/> | <input type="checkbox"/> | July 18 |
| Kansans and the Experience of the Civil War | <input type="checkbox"/> | <input type="checkbox"/> | June 3 |

| Title | In-person | Online | Start Date |
|---|--------------------------|--------------------------|------------|
| Overland Park (continued) | | | |
| Lady Clementine <small>(one day)</small> | <input type="checkbox"/> | <input type="checkbox"/> | June 26 |
| Middle Eastern and North African Cinema | <input type="checkbox"/> | <input type="checkbox"/> | July 16 |
| Travel to Hawaii | <input type="checkbox"/> | <input type="checkbox"/> | June 25 |
| Roeland Park | | | |
| Adventures in Architecture | <input type="checkbox"/> | | June 26 |
| Topeka | | | |
| Beatles Studio Years | <input type="checkbox"/> | | July 18 |
| Broadway Musicals of Lerner <small>(Brewster Place residents no charge. Open to public.)</small> | <input type="checkbox"/> | | June 11 |
| Immigration Irish, German and Italian | <input type="checkbox"/> | | July 12 |
| Personal Journey Down the Arkansas River | <input type="checkbox"/> | | June 12 |
| Thomas Edison: An American Genius | <input type="checkbox"/> | | June 27 |
| The Young Generals of the American Civil War <small>(Brewster Place residents no charge. Open to public.)</small> | <input type="checkbox"/> | | July 16 |
| Online Only | | | |
| America the Beautiful 50 States, 50 Tastes | | <input type="checkbox"/> | June 3 |
| Bones and Stones | | <input type="checkbox"/> | June 26 |
| Expressionism | | <input type="checkbox"/> | July 15 |
| Finger Foods | | <input type="checkbox"/> | July 17 |
| From "Titanic" to "Napoleon" | | <input type="checkbox"/> | June 5 |
| Illustrating the West | | <input type="checkbox"/> | July 17 |
| The Sacred Feminine and Odysseus | | <input type="checkbox"/> | July 18 |
| Smartphone Filmmaking | | <input type="checkbox"/> | July 16 |
| Synopsis of Supreme Court | | <input type="checkbox"/> | June 26 |
| KU Osher Member-Only Events (no additional cost) | | | |
| Alzheimer's and Brain Health | <input type="checkbox"/> | <input type="checkbox"/> | June 13 |
| Monarch Conservation | <input type="checkbox"/> | | June 27 |
| Luis Humberto Salgado | <input type="checkbox"/> | | July 11 |
| Book Club | | <input type="checkbox"/> | June 21 |
| Book Club | | <input type="checkbox"/> | July 19 |
| Artistic Exploration Club | | <input type="checkbox"/> | June 6 |
| Artistic Exploration Club | | <input type="checkbox"/> | July 12 |
| KU Osher Outing - Lawrence | <input type="checkbox"/> | | June 18 |
| KU Osher Outing - Topeka | <input type="checkbox"/> | | July 1 |
| KU Osher Outing - Overland Park | <input type="checkbox"/> | | July 31 |

PART II KU OSHER SUMMER 2024 REGISTRATION (continued)

C. SPECIAL EVENTS A \$25 KU Osher membership must be paid to participate in events

KU Mini College, June 3-5

- KU Osher Members** \$165
 Non-KU Osher Members \$190

“Fiddler on the Roof,” Friday, June 21

- Non-Theatre Lawrence Member** \$100
 Theatre Lawrence Member \$55
 Historic Kansas City Bus Tour, Friday, June 28. \$115
 Presidents and First Ladies, Thursday, July 18. Free

SUBTOTAL \$ _____

D. SCHOLARSHIPS

Aldersgate residents no charge for “Thomas Edison: An American Genius.”

_____ # of free courses _____ # of \$25 courses _____ # of \$50 courses TOTAL \$ _____

Brewster Place residents no charge for “The Broadway Musicals of Lerner” and “The Young Generals”

_____ # of free courses _____ # of \$25 courses _____ # of \$50 courses TOTAL \$ _____

Clay County residents, age 60+ pay \$15 per course for “Bond. James Bond...,” and “Thomas Edison...”

_____ # of \$15 courses _____ # of \$25 courses _____ # of \$50 courses TOTAL \$ _____

SUBTOTAL \$ _____

E. KU OSHER COURSE FEES

_____ \$25 Required Fee _____ # of 3-wk courses (x\$50) _____ # of 2-wk courses (x\$35) _____ # of 1-day courses (x\$25)

SUBTOTAL \$ _____

F. BE A FRIEND OF KU OSHER Please contribute to our campaign

\$50 Supporter \$75 Patron \$100 Benefactor \$250 Sponsor \$500 Trustee \$1000+ Regent Other \$ _____

SUBTOTAL \$ _____

GRAND TOTAL DUE *(Add SUBTOTALS for total payment)* \$ _____

Check enclosed, payable to the University of Kansas.

Credit Card. For security reasons, KU cannot accept credit card information written on the registration form. If you wish to pay by credit card, please call our Registration Team at 785-864-6779.

WAYS TO PAY

ONLINE: osher.ku.edu

PHONE: (785) 864-6779 or TTD (800) 766-3777

MAIL: Complete the registration form and mail with payment to:

KU Jayhawk Global, 12600 Quivira Road, Overland Park, KS 662213

NOTE: This address is for mail-in registrations ONLY. To pay in person, see IN PERSON details below.

IN PERSON: Bring your completed form and payment to: 1515 St Andrews Drive, Lawrence, KS 66047

Individuals with disabilities are encouraged to attend University of Kansas sponsored events. If you require a reasonable accommodation in order to participate in an event, please email jayhawkglobal@ku.edu or call 785-864-6779 at least three weeks before the first day of the event. Some events may require notice earlier than three weeks and require you contact a specific individual; if so, that information is provided in the event-specific information.

WE'RE PROUD OF OUR KU OSHER PARTNERS

The Osher Lifelong Learning Institute at the University of Kansas is able to provide university-quality programming in northeast Kansas and the Greater Kansas City Area because of the strong commitment of our 15+ event partners. We congratulate them for their dedication to lifelong learning and thank them for their support.



Aldersgate Village Life Plan Community
7220 SW Asbury Dr., Topeka
aldersgatevillage.org
785-478-9440



Johnson County Parks & Recreation District
800 W Madison St, Gardner, KS
jcprd.com
913-831-3355
Classes held at Roeland Park Community Center
4850 Rosewood Drive, Roeland Park



Brandon Woods at Alvarar
1501 Inverness Dr., Lawrence
brandonwoods.com
785-838-8000



Leavenworth County Council on Aging
711 Marshall St Suite 100, Leavenworth
leavenworthcounty.gov
913-684-0777



Brewster Place
1205 S.W. 29th St., Topeka
brewsterplace.org
785-274-3350



Riley County Senior Center
301 N. 4th Street, Manhattan
seniorsservicecenter.org
785-537-4040



Clay County Senior Services
4444 N. Belleview, Ste. 110, Gladstone, Mo.
claycoseniors.org
816-455-4800
Classes held at Northland Innovation Center
4th floor, 6889 N. Oak Trafficway, Gladstone



Senior Resource Center of Douglas County
745 Vermont St, Lawrence
yoursrc.org
785-842-0543



Eudora Community Museum
720 Main Street, Eudora, KS 66025
cityofeudoraks.gov/100/Eudora-Community-Museum
785-690-7900



Theatre Lawrence
4660 Bauer Farm Drive, Lawrence
wp.theatrelawrence.com
785-843-7469



Jayhawk Area Agency on Aging
2910 Southwest Topeka Blvd., Topeka
jhawkaaa.org
785-235-1367



Washburn University
1700 S.W. College Ave., Topeka
www.washburn.edu
785-670-1010



Emporia Senior Center
603 E 12th Ave, Emporia
620-343-3160

THANK YOU TO OUR FELLOW KU PARTNERS

Our KU partners enable us to share the rich resources of the University of Kansas through our statewide programming.

KU Alumni Association
1266 Oread Ave., Lawrence
800-584-2957 • kualumni.org

KU Endowment Association
P.O. Box 1817, Lawrence
785-832-7400 • kuendowment.org

KU Jayhawk Global and KU Mini College
1515 St. Andrews Drive, Lawrence
785-864-6779 • jayhawkglobal@ku.edu

KU Edwards Campus
12600 Quivira Rd., Overland Park
913-897-8400 • edwardscampus.ku.edu

KU in Leavenworth
TownePlace Suites, 1001 N. 4th Street, Leavenworth
913-897-8596 • leavenworth.ku.edu



Osher
LIFELONG LEARNING INSTITUTE
AT THE UNIVERSITY OF KANSAS

Summer 2024

**Classes begin
June 3!**

Explore the world with the KU Osher Institute! Enjoy enrichment short courses specially developed for folks 50 and better.

The University of Kansas Osher Lifelong Learning Institute offers exciting and engaging noncredit short courses and events developed for adult learners 50 and older. This summer, courses will be held in-person, online, and hybrid.

For information or to enroll, call 785-864-6779 or go online at osher.ku.edu.

